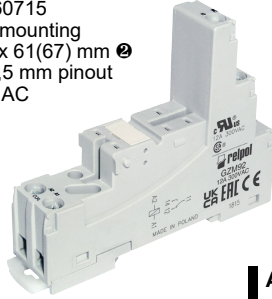


Sockets and accessories

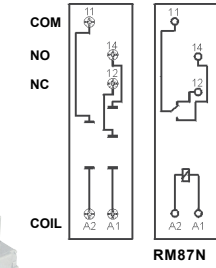
GZM92

For RM87N, RM87N sensitive

Screw terminals
Max. tightening moment
for the terminal: 0,7 Nm
35 mm rail mount
acc. to EN 60715
or on panel mounting
81,6 x 15,9 x 61(67) mm ②
One pole, 3,5 mm pinout
12 A, 300 V AC



Connection diagrams



RM87N



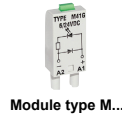
GZP80-0400



GZT80-0040



GZT80-0035



Module type M...

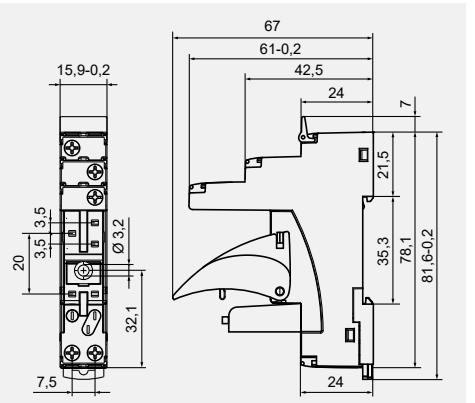


ZGGZ80



GZM80-0041

Dimensions



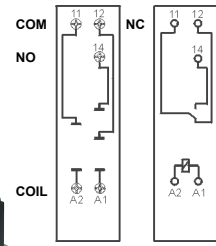
GZS92

For RM87N, RM87N sensitive

Screw terminals
Max. tightening moment
for the terminal: 0,5 Nm
35 mm rail mount
acc. to EN 60715
or on panel mounting
76,8 x 15,8 x 42,5(57,1) mm ②
One pole, 3,5 mm pinout
12 A, 300 V AC



Connection diagrams



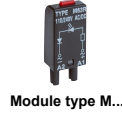
RM87N



GZS-0040



TR



Module type M...

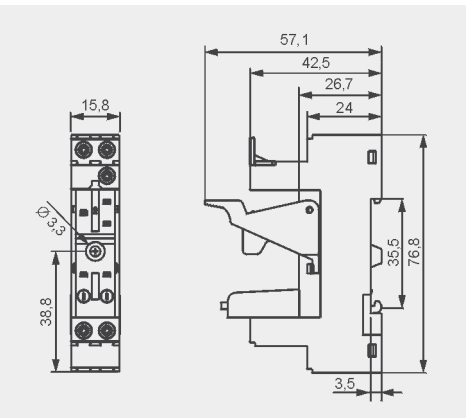


ZGGZ80



GZM80-0041

Dimensions



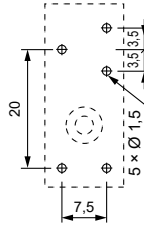
EW35

For RM84, RM85, RM85 inrush,
RM85 105 °C sensitive,
RM87L, RM87L sensitive,
RM87P, RM87P sensitive,
RM83, RMP84, RMP85

For PCB
30,2 x 13 x 9,4 mm
One pole, 3,5 mm pinout
10 A, 250 V AC



Pinout



MP16-2
(RM84/85/87)



MH16-2
(RM84/85/87)



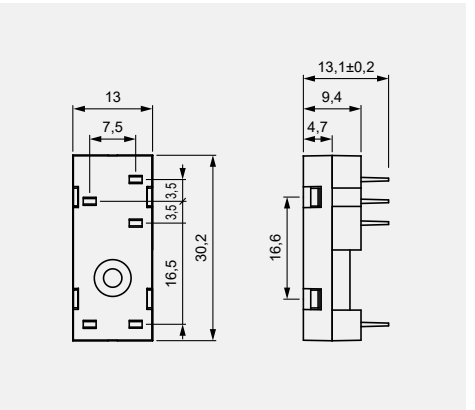
MP25-2
(RMP84/85)
(RM83)



MH25-2
(RMP84/85)
(RM83)

Accessories

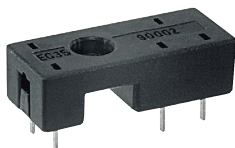
Dimensions



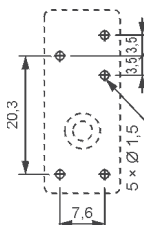
EC 35

For RM87N, RM87N sensitive

For PCB
31,3 x 12,7 x 9 mm
One pole, 3,5 mm pinout
12 A, 300 V AC



Pinout



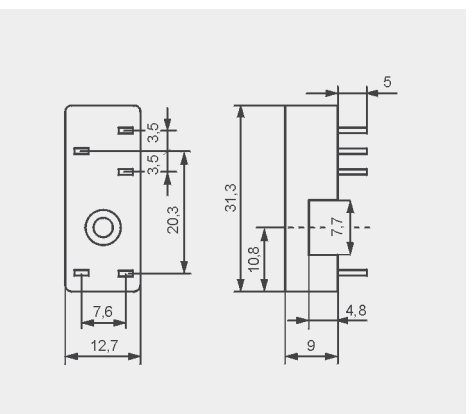
MP16-2



MH16-2

Accessories

Dimensions



① Mounting and sub-assemblies of accessories in the socket; Signalling / protecting modules type M... - see www.repol.com.pl
② In the bracket the height of socket with retainer / retractor clip is shown.